



Capital Bikeshare's First-mile/Last-mile Ridership

Paul DeMaio

Capital Bikeshare Program Manager, Arlington County, VA

Transportation Research Board - 1/12/14



Join.



Take.



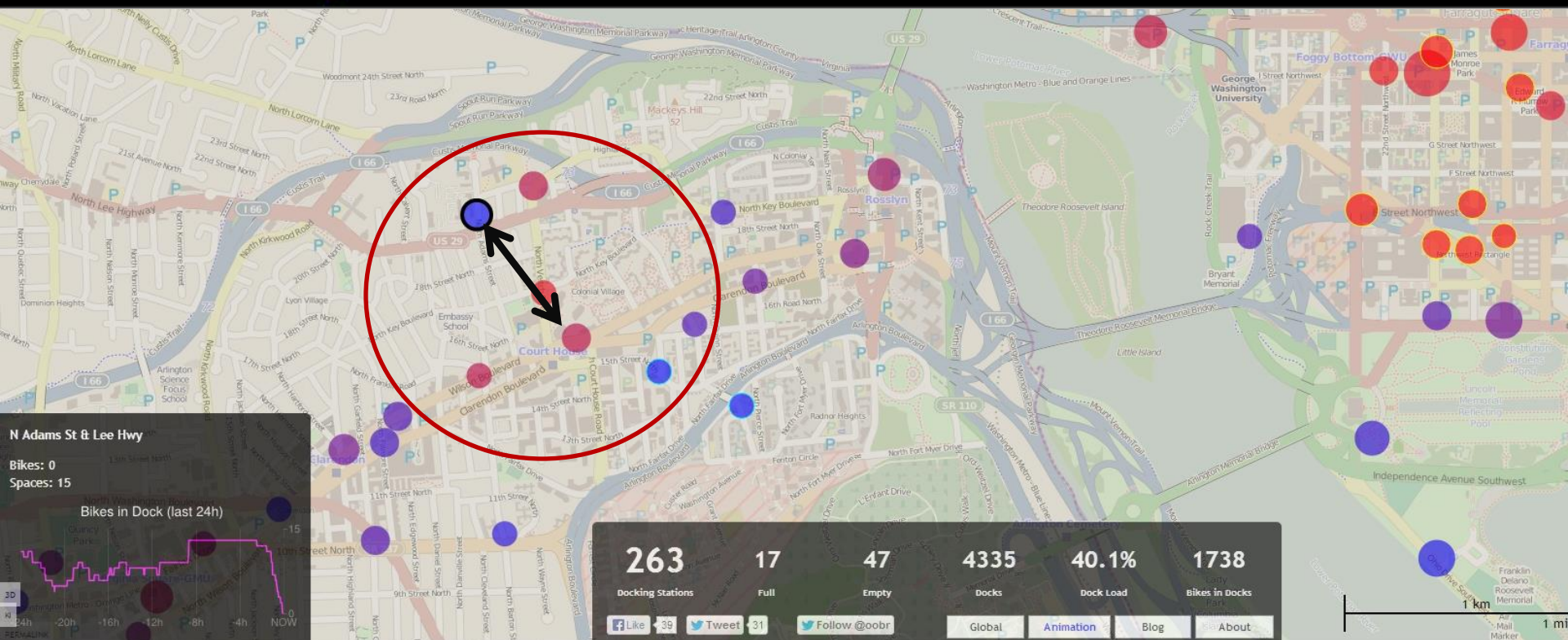
Ride.



Return.



capital bikeshare™



Our 2012 survey showed that 54% of respondents said at least one of the bikeshare trips they made in the previous month either **started** or **ended** at a Metrorail station.

<http://bikes.oobrien.com/washingtondc/>



Join.



Take.



Ride.



Return.

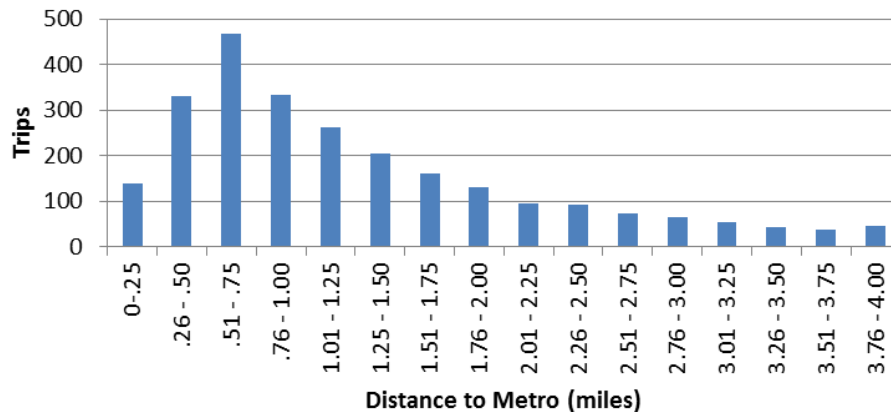
d.
District Department of Transportation

ARLINGTON
VIRGINIA



First-Mile

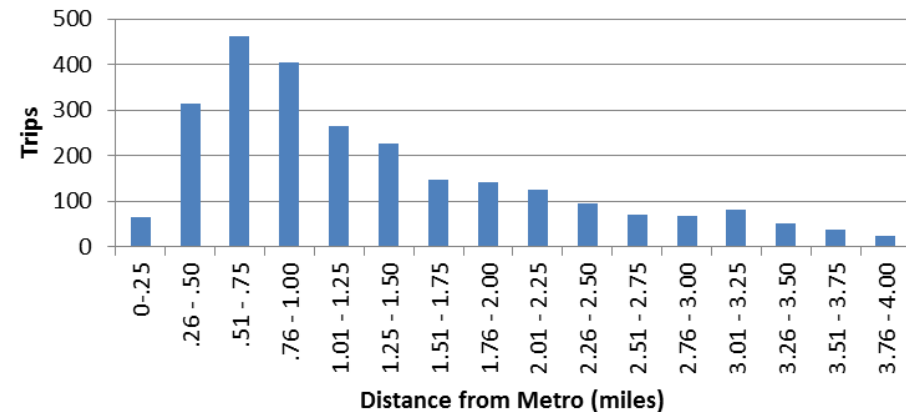
Trips Ending at Metro
7/1/13 - 7/8/13



41% of first-mile trips are between .25 – 1.0 mi.

Last-Mile

Trips Starting at Metro
7/1/13 - 7/8/13



39% of last-mile trips are between 0.25 – 1.0 mi.



Join.



Take.



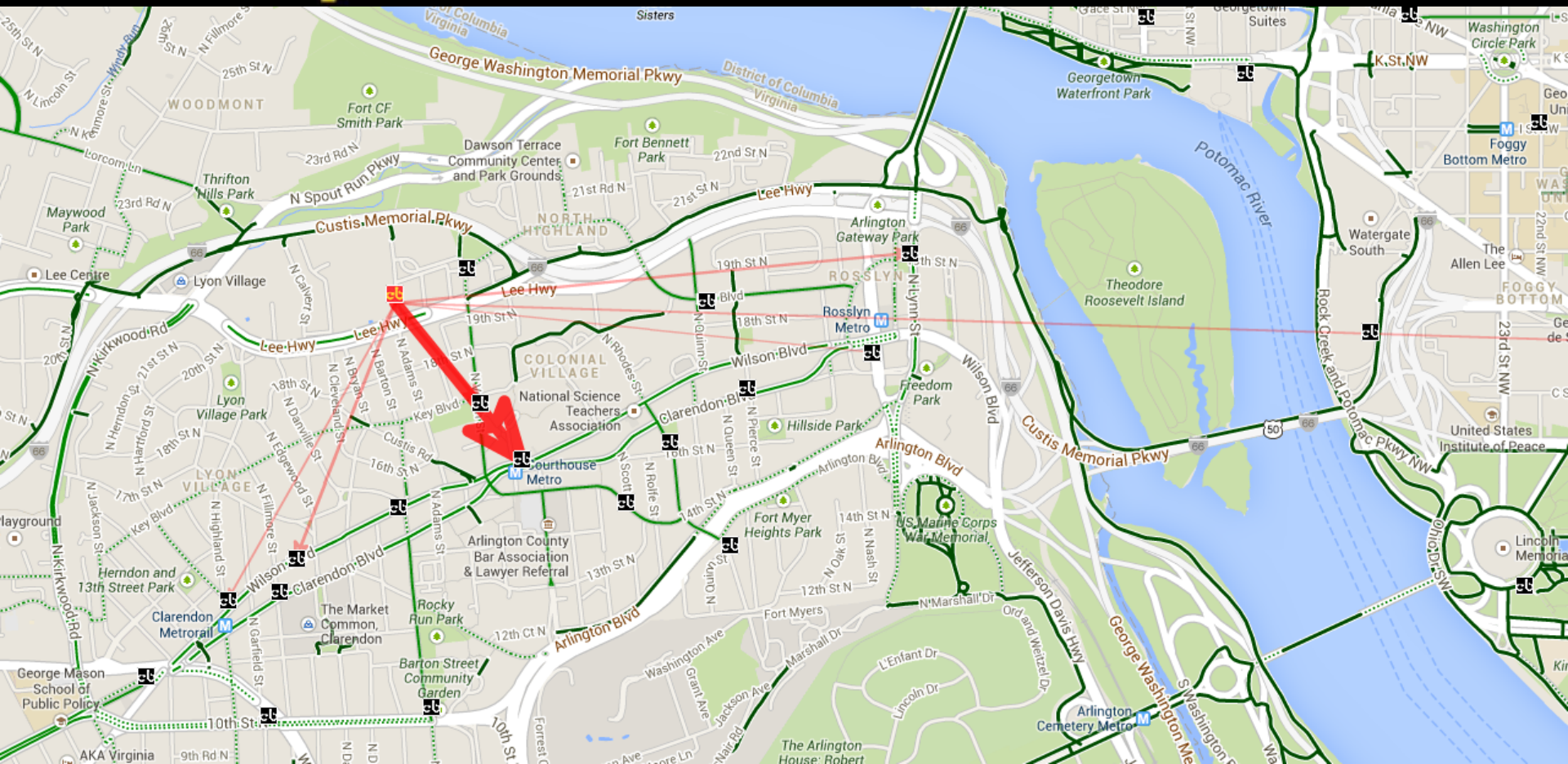
Ride.



Return.



capital bikeshare™



Adams & Lee station to Courthouse Metro CaBi station

Distance: 0.57 mi

Data visualization from M.V. Jantzen using 2Q 2013 data
<http://mvjantzen.com/tools/visualizer/>



Join.



Take.



Ride.



Return.

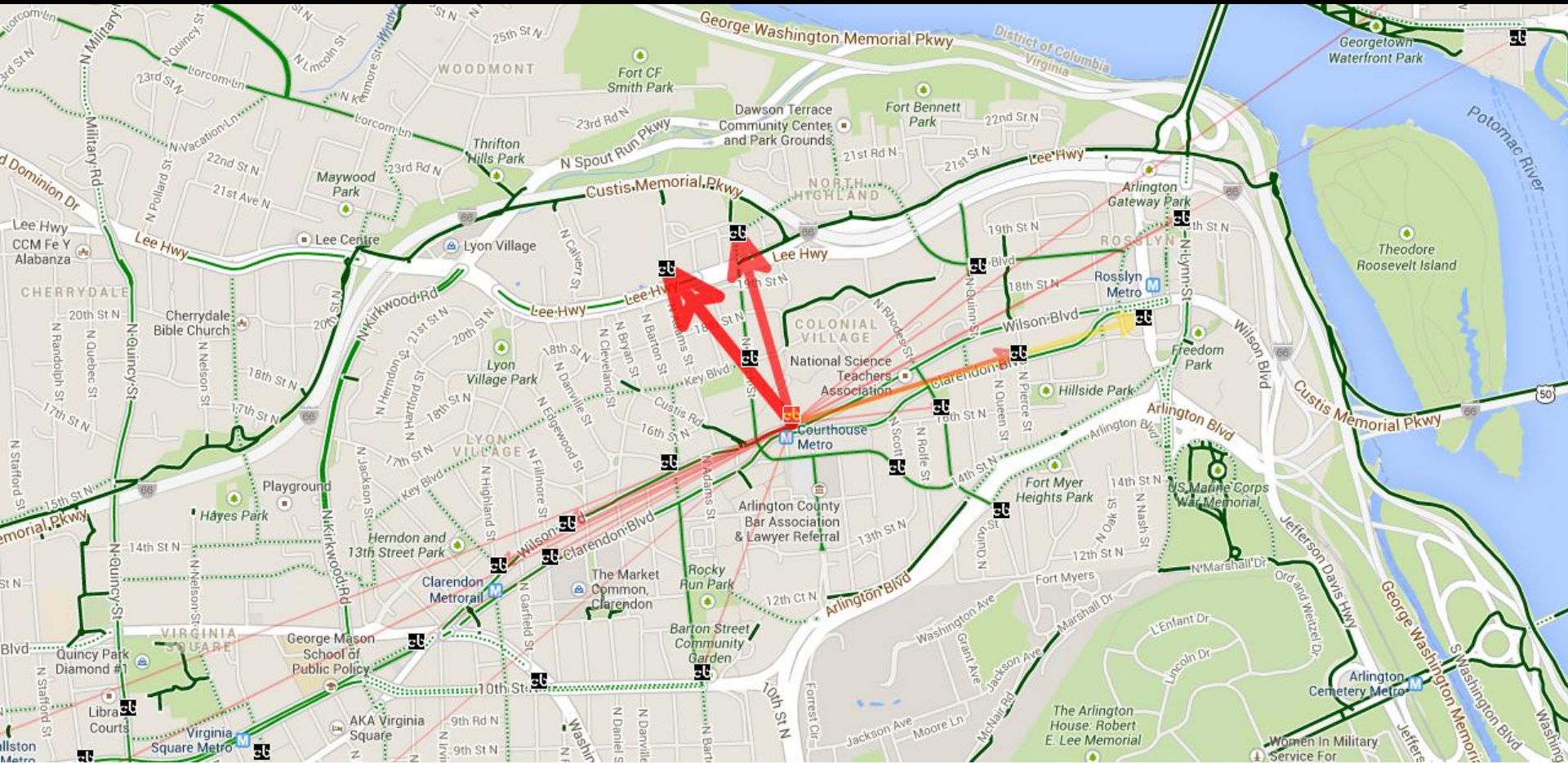
d.

Arlington Department of Transportation

ARLINGTON
VIRGINIA



capital bikeshare™



Courthouse Metro CaBi station to Adams & Lee station

Distance: 0.57 mi



Join.



Take.



Ride.



Return.

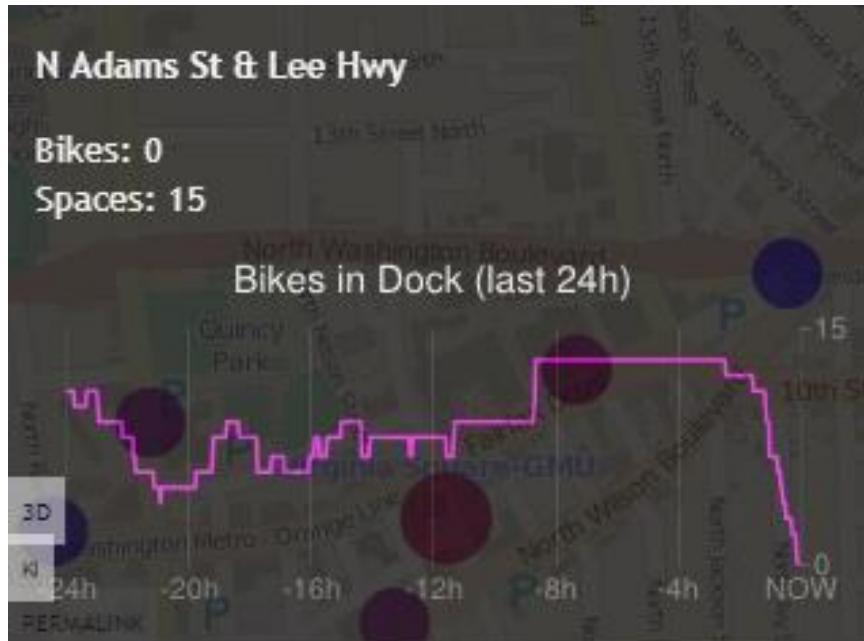
d.

District Department of Transportation

ARLINGTON
VIRGINIA



FIRST-MILE



October 3, 2013 at 9am at
 Adams & Lee station

LAST-MILE



December 13, 2013 at 8:13am
 at Adams & Lee station



Join.



Take.

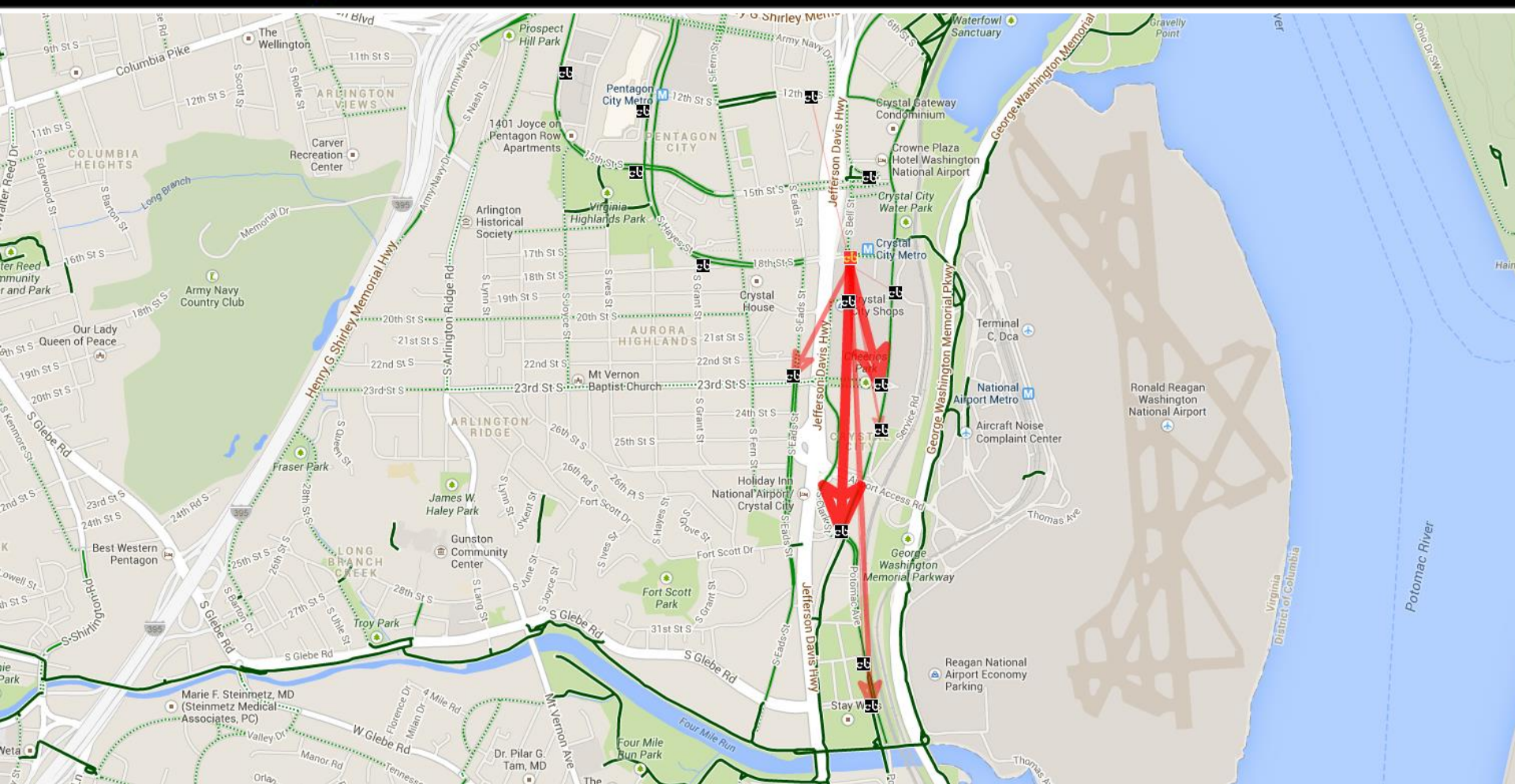


Ride.



Return.

capital bikeshare™



Crystal City Metro to Crystal & 27th

Distance: 0.75 mi



Join.



Take.



Ride.



Return.

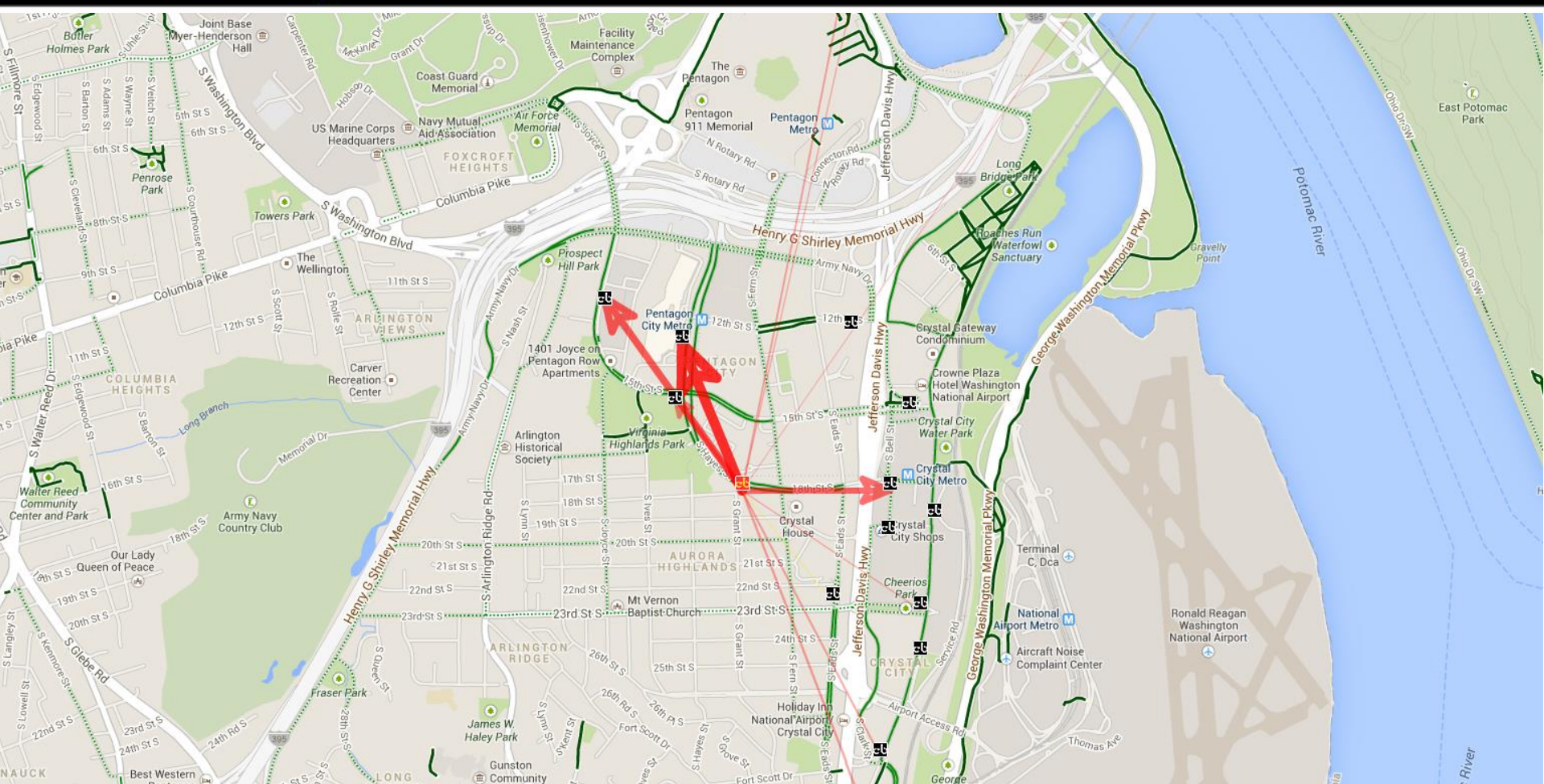
d.

District Department of Transportation

ARLINGTON
VIRGINIA



capital bikeshare™



Hayes & 18th to Pentagon City Metro

Distance: 0.38 mi



Join.



Take.



Ride.



Return.

d.

District Department of Transportation

ARLINGTON
VIRGINIA



capital bikeshare™



Join.



Take.



Ride.



Return.

d.

District Department of Transportation

ARLINGTON
VIRGINIA



CONTACT INFORMATION:

Paul DeMaio
Capital Bikeshare Program Manager
consultant to Arlington County Commuter Services
Department of Environmental Services
Arlington County, VA
202-684-8126
paul@metrobike.net



Join.



Take.



Ride.



Return.

